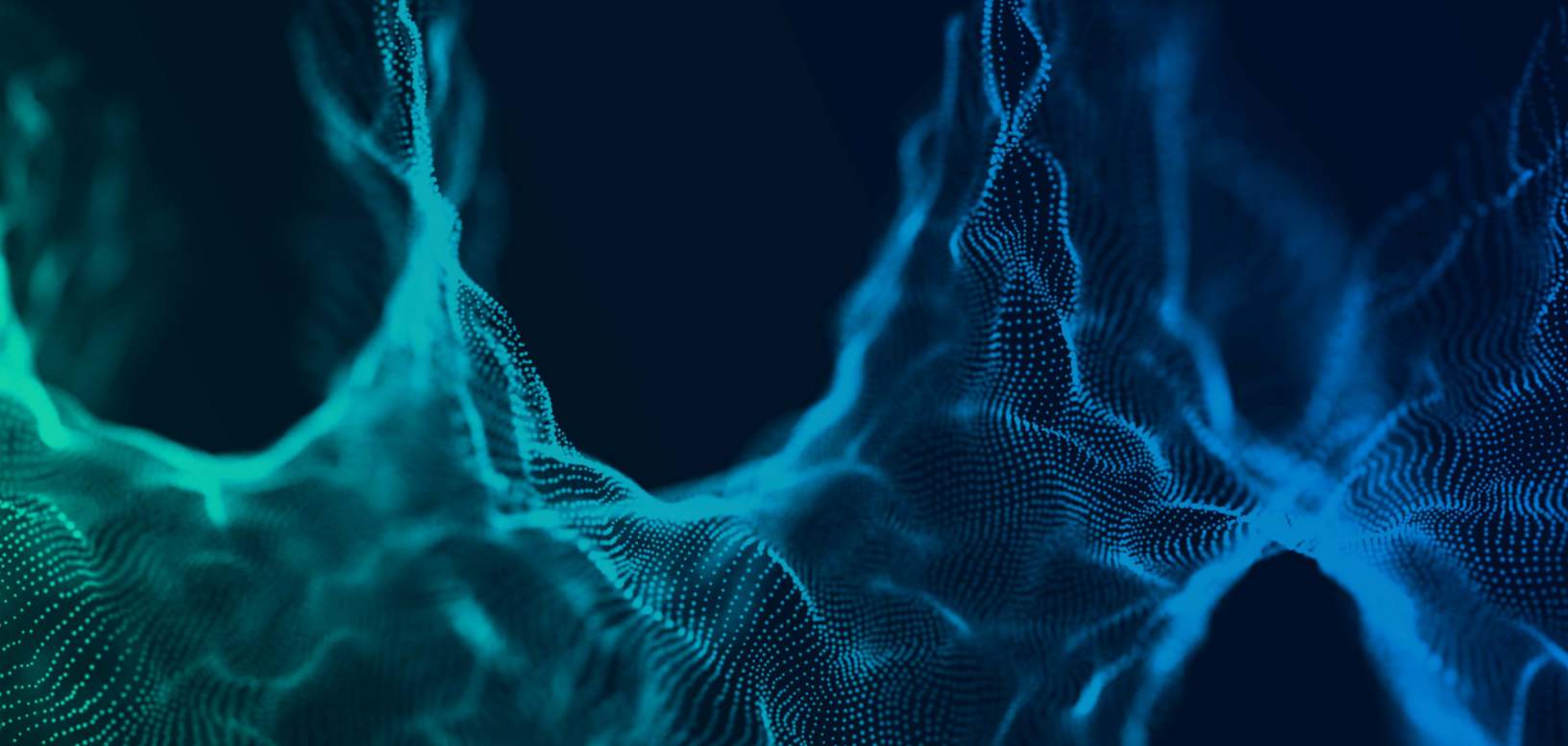


National Reach, Seamless Peering

Any2Exchange® for Internet Peering



With more than 20 years of operation as one of the original peering exchanges, CoreSite operates one of the largest and most established peering communities in the United States with more than 400 members and some of the top internet exchanges natively within our data centers, including AMS-IX, DE-CIX, LINX, NYIIX, United IX, BBIX, MASS - IX, SFMIX, and CIX - ATL.

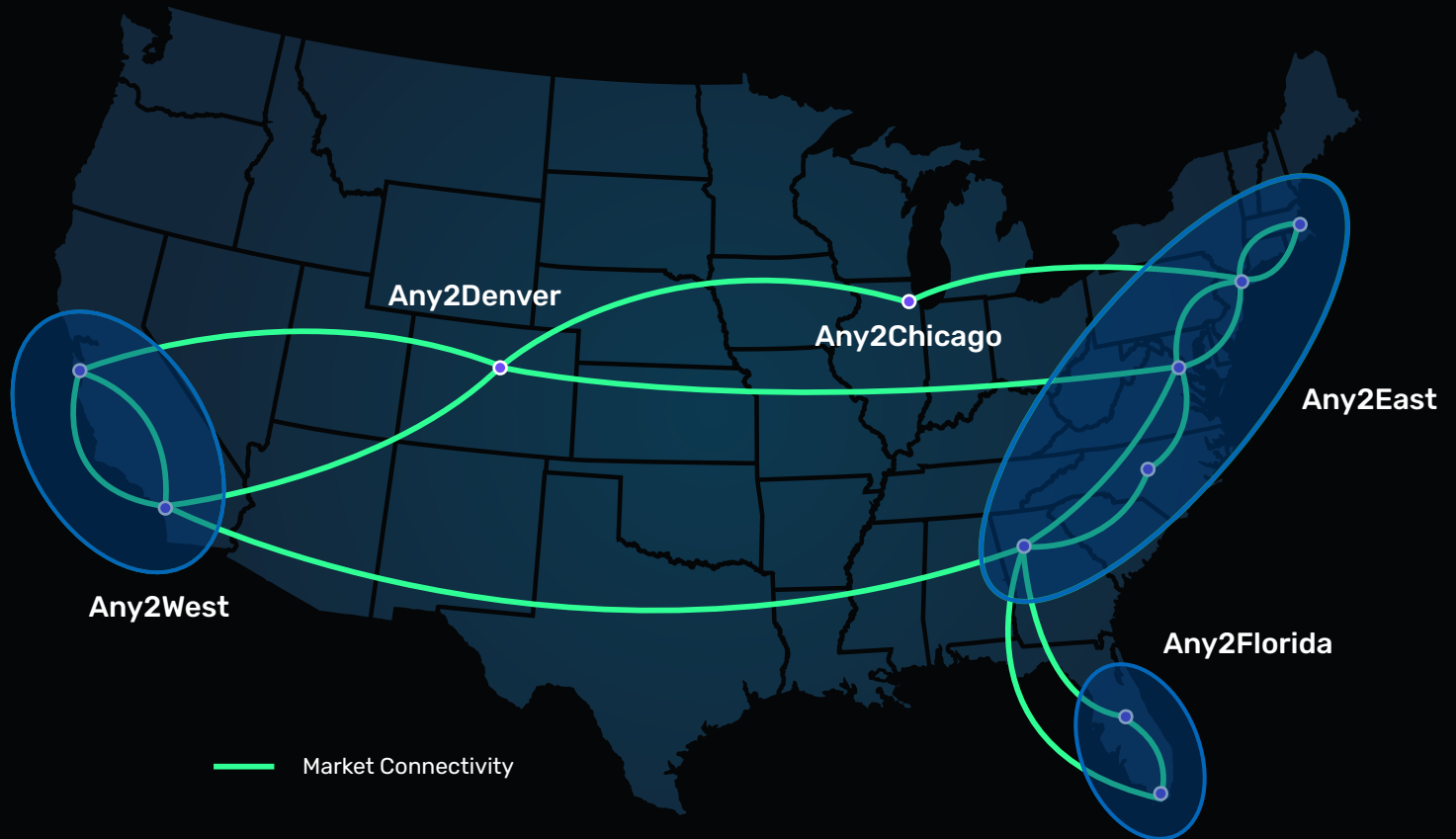
CoreSite's strategically located regional exchanges in the U.S., include:

- Any2East® exchange (Boston, New York, Northern Virginia and Atlanta markets)
- Any2West® exchange (Silicon Valley and Los Angeles markets)
- Any2Florida™ exchange (Orlando and Miami markets)
- Any2Denver and Any2Chicago exchanges are also highly connected exchanges within these two markets

BENEFITS

- ✓ Lower costs by directly peering with other participants
- ✓ Peering creates faster, more direct data flows with fewer network hops for improved performance and lower latency
- ✓ Scale peering to multiple participants through a single BGP session by connecting to an Any2Easy route server
- ✓ Grow your ecosystem by enabling peering relationships that would be impossible without the exchange

The Intersection of Interconnection



GET STARTED

To take advantage of the opportunities afforded by the Any2Exchange® for internet peering, customers must order an interconnection with CoreSite and separately negotiate a peering agreement directly with their network(s) of choice. A connection to the global internet as well as a registered Autonomous System Number (ASN) from a regional internet registry such as ARIN or RIPE are both required to peer on the Any2Exchange® for internet peering.

Visit [CoreSite.com](https://www.coresite.com) to get started.

**Find out more.
Click. Call. Write.**



[CoreSite.com](https://www.coresite.com) | +1 866.777.CORE | Info@CoreSite.com

